

DESIGN AND IMPLEMENTATION OF VPN- MPLS (Virtual Private Network – Multi Protocol Label Switching) TOPOLOGY MODEL ON IP (Internet Protocol)

by Artikel 8

Submission date: 17-Jan-2024 11:04AM (UTC+0700)

Submission ID: 2272322659

File name: rotocol_Label_Switch_Topology_Model_on_IP_Internet_Protocol.pdf (1.16M)

Word count: 4562

Character count: 24391

PROCEEDINGS

Cloud computing is when the user use servers that are not stored in user's location, not owned by user, and not maintained by user, to provide the user with the programs that user use and to store and retrieve user's data. This is contrast to hosting and maintaining own server, loading and updating own software, and storing and backing up own data.

Today, the development of cloud computing is raised rapidly. There are many companies develop this model and a many kinds of cloud-computing appeared. Such as Ubuntu one's Canonical Ltd and SkyDrive's Microsoft as cloud storage, Google apps and office web apps as cloud application, and windows azure as cloud operating system.

More important, it provide a lot of benefits for education. Nowadays, at first glance it sounds a little scary since it relies on someone other than ourselves and our own organization for services that are most likely critical to our operation. So why are schools increasingly turning to cloud computing as an alternative? Several reasons we have found why this to be the right solution for our educational system are: Saving money; Saving time; Anytime-anywhere access; Reduced compatibility issues; Increased collaboration; Increased services offered; Foundation for new projects; Peace of mind. And many more.

For those in education sector, "the cloud" can seem like a nebulous and unattainable technology goal, used only by large enterprises and corporations. But the cloud has the power to drastically advance the goals of the educational system: to make it easier for institutions to empower their students to succeed while at the same time cutting costs and expanding accessibility.



<http://um.ac.id>



PROCEEDINGS

International Seminar on Electrical, Informatics, and Its Education

um The Learning University

PROCEEDINGS SEIE 2013

International Seminar on Electrical, Informatics, and Its Education

Electrical Engineering Department
Faculty of Engineering
University of Malang



ISSN 9 77 20 8 9

PROCEEDING

3

INTERNATIONAL SEMINAR ON ELECTRICAL, INFORMATICS, AND ITS EDUCATION

COMMITTEE OF PROCEEDING SEIE 2013

Head Advisor	:	Rector of State University of Malang Prof. Dr. Suparno, M.Pd.
Advisor	:	Dean Of Engineering Faculty Dr. Waras Kamdi, M.Pd.
Responsible Person	:	Head of Electrical Eneering Department Drs. Slamet Wibawanto, M.T.
Head of Conference	:	Dr. Hakkun Elmunsyah, S.T., M.T.
Secretary	:	Heru Wahyu Herwato, S.T., M.T.
Reviewer	:	Prof. Dr. Thomas Kohler (Dresden University of Technology, Germany) Prof. Andrew Nafalski (UNISA, Australia) Prof. Kohei Arai (Japan) Dr. Muladi, S.T., M.T. (Indonesia) Prof. Dr. Abdul Hanan Abdullah (Malaysia) Azizul Azhar bin Md Yusoff (Malaysia) Dr. Bahaaeldin Mohamed (Deutch)
Steering Committee	:	Yuni Rahmawati, S.T., M.T. I Made Wirawan, S.T., S.S.T. Dyah Lestari, S.T., M.Eng. Ahmad Fahmi, S.T. M.T. Hary Suswanto, S.T., M.T Sujito, S.T., M.T. Triyanna W., S.T., M.T. Didik Dwi Prasetyo, S.T., M.T. M. Jauharul Fuady, S.T., M.T. Utomo Pujianto, S.Kom., M.Kom.

PREFACE

³ International Seminar on Electrical, Informatics and Its Education 2013 (SEIE 2013) is a media for the dissemination of information and publication of researches from universities, researchers, teachers, and practitioners. SEIE will accommodate the dissemination of information and research on Electrical, Information Technology and Education of both.

SEIE 2013 is an international seminar organized by the Electrical Engineering Department, Faculty of Engineering, State University of Malang. This seminar is the third of SEIE first seminar which was held in 2009 and held every two years on a regular basis.

Article published, packed with international categories classified in two groups. The first group contains papers on the topic of electro and its application in education. The second group contains papers on the topic of informatics and its application in education.

The authors came from the local Indonesian and overseas including Japan, Libya, Taiwan and Vietnam. Any posts or articles that have been entered in a review by a competent reviewer.

The committees want to deliver big gratitude for your participation, and congratulation for author that the papers accepted and published SEIE 2013's proceeding. Criticis and suggestions are expected for the improvement this seminar. We hope this proceeding can be used as one of reference technology development in electrical and informatics engineering and its education.

Malang, October 5th, 2013
Chairman,

Dr. Hakkun Elmunsyah, S.T., M.T.

**PREFACE FROM HEAD OF ELECTRICAL ENGINEERING
DEPARTMENT ENGINEERING FACULTY
STATE UNIVERSITY OF MALANG**

International Seminar on Electrical, Informatics, and Its Education (SEIE) 2013 held after the Engineering Faculty 48th Anniversary which simultaneously of State University of Malang 59th Anniversary. SEIE 2013 is held every other year by Electrical Engineering Department, Faculty of Engineering, State University of Malang. In 2009, it was called National Seminar Electrical, Informatics, and Its Education (SNEIE) 2009. For SEIE 2013 has already included an International area and has published to some neighborhood countries as Japan, Libya, Taiwan, Vietnam, etc.

The seminar packed with international categories classified in two groups. The first group contains papers on the topic of electro and its application in education. The second group contains papers on the topic of informatics and its application in education.

Hoping this seminar would be a place of researchers and practitioners to publicize and then disseminate the results of these researches that have taken place due to the progression of sciences and education throughout Electrical Engineering and Informatics Engineering.

Malang, October 5th 2013
Head of Electrical Engineering Department

Drs. Slamet Wibawanto, M.T.

CONTENTS

STEERING COMMITTE	II
PREFACE	III
PREFACE FROM HEAD OF ELECTRICAL ENGINEERING DEPARTMENT	IV
CONTENTS	V

Electrical And Its Education

1.	Aripriharta	PSPICE-based Experiments in Teaching Power Electronics	A-1
2.	Yunus Tjandi, Dyah D. A.	Diagnosing Induction Motor Fault By Using Intelligent Software	A-4
3.	M Khairudin, Zamtinah, TH Trimaryadi	Real Time System Identification of a Nonlinear Two – Link Flexible Robot Manipulator	A-8
4.	M. Rodhi Faiz	Design of Grid-Tie Inverter with Anti Islanding System	A-12
5.	Syafriyudin, A.A.P. Susastriawan, Mursid Sabdulah	Development of Clinical Decision Support System Prototype for Diagnosis and Management Dengue Hemorrhagic Fever	A-16
6.	Sujito	Simulation on Robot Control to Move Drink Bottle Using Programmable Logic Controller	A-19
7.	M. Donny Koerniawan, Weijun Gao	The Relation of Outdoor Environment and effectively Energy use in Building Study Case: Honjo Nishi Danchi Kitakyushu, Japan	A-24
8.	Aulia el hakim	Goalkeeper Robot Soccer Optimazation Using Takagi-Sugeno FIS Method	A-29
9.	Didik Nurhadi	Implementation of Collaborative Learning Model With Industries To Improve Students Competency Quality Of The Vocational Education In Isolated Area	A-34
10.	Sapto Haryoko, Lu'mu, Hendra Jaya	Integrating Virtual Laboratory From Conventional Lab Into Vocational High School To Facilitate Practicum Activity	A-45
11.	Puger H. P.	The Application of Spoken Test In The Learning Evaluation	A-52
12.	Riana T.Mangesa, Dyah Darma Andayani	Implementation of Technology as A Media With Character Education Integration On Teaching Skill In Vocational High School	A-57
13.	Ahmad Mursyidun Nidhom	The Relation Readiness of Learning, The Long of Learning, The Suitable of Place and The Participation of Workstation With The Result of Apprenticeship Competency Skills of TKJ Students at SMK Ba City	A-60
14.	Tri Atmadji Sutikno	Building Cooperation Between Vocational High School and Industry for Suitability of Graduates Competence	A-66
15.	Setiadi Cahyono Putro	The Role of Leadership In Education Policy to Improve Quality of Vocational Education Indonesia In The Future	A-70
16.	Hary Suswanto	Developing a Model of a Competency and Students Computer Network International Certification Test for Vocational High Schools	A-77
17.	Imam Sutrisno, Mohammad Abu Jami'in, Jinglu Hu	An Improved Fuzzy Switching Adaptive Controller for Nonlinear Systems Based on Quasi-ARX Neural Network	A-85
18.	Y o t o	Industrial Society Participation On Vocationalhigh School Quality Improvement With "Cooperative Education Class" Model	A-94
19.	Ngo Truong Giang,	An Effective Shape Matching Approach Based on Skeleton Graph	A-100

	Nguyen Trong The, Ngo Quoc Tao		
20.	Ahmad Fahmi, Fitriana S. , Wijono	Timer & Dimmer as an Electrical Energy Saver for Public Street Lighting	A-106
21.	Yuni Rahmawati, Suprayitno	Correlation Of New Student Path Selection To Student Achievement	A-110
22.	Fx Budi Rahardjo	Ki Hajar Devantoro And Inonesia Competence Teacher	A-114

Informatics And Its Education

1.	Ali Mohamed A.	How to Avoid Dangling Node in Pagerank Computation	B-1
2.	Andy Rahman, Siti R. , Dwi S.	Optimization Comment And Function Detection On Open Source Programming Language Using Regex	B-4
3.	Anik Nur H. , Kohei Arai	Predicting Quality of Answer in Collaborative Q/A Community	B-9
4.	Arif Muntasa	Line Detection Model and Adaptive Threshold Based Image Segmentation For Handwriting Word Recognition	B-14
5.	Efrita Arfah Zuliani	One Day Ahead Load Forecasting Using Recurrent Neural Network	B-19
6.	Hermawan, Hamdi Mubarak, Firdaus Solihin	Infrastructure As A Sevice In Cloud Computing For Education Community Use Proxmox	B-23
7.	M. Irfan, Lailis Syafa'ah, Machmud E.	Design And Implementation Of Vpn-Mpls (Virtual Private Network – Multi Protocol Label Switching) Topology Model On Ip (Internet Protocol)	B-29
8.	Muhammad Rusli, I Wayan Ardhana, I Nyoman Sudana	The Effect of the Type Visualizing—on the Presentation Strategy of the Computer-Based Multimedia Learning—and the Learning Style toward the Student's Ability in Applying Concept and Procedure of Object-Oriented Modelling	B-35
9.	M. Zainal Arifin, Antonius Duty S	eMarketing Strategy in Property Business	B-41
10.	Setiawardhana, Sigit Wasista, Maria M.	Object Detection Using Viola Jones And Template Matching Based On Stereo Camera	B-44
11.	Sigit Wasista, Setiawardhana, Afrischa Oktavia	Human Facial Expression Detection System Using Pca And Svm	B-49
12.	Siti Sendari, Kotaro Hirasawa	Improving Performance of Genetic Network Programming Using Multi-Stage Reinforcement Learning	B-53
13.	Suharyanto, Rizka Humardewayanti A, Luthfan Lazuardi	Development of Clinical Decision Support System Prototype for Diagnosis and Management Dengue Hemorrhagic Fever	B-58
14.	Trong-The Nguyen, Chin- Shiuh Shieh, Mong-Fong Horng	Prolonging the Network Lifetime in WSN using Fuzzy Clustering Topology	B-62
15.	Ely Setyo Astuti, Dwi Puspitasari,	Designing and Building An Application Configuration of Open DHCP Server and Proxy based on Client Server	B-71

	Ariadi Retno Tri H R		
16.	Triyanna Widiyaningtyas	Development of Web-Based Module on Database Subject	B-77
17.	Antonius Duty Susilo, M. Zainal Arifin	Social Media's Effect on Student Learning	B-80
18.	Bernardus S. W., Sunaryo S. , Khairudin	Supporting and Inhibiting Factors for The Application of Blended Learning for Professional Vocational Teacher Education in Indonesia	B-84
19.	Mila Mumpuni	Blended Learning-Based Trainings for Expenditure Treasurers	B-89
20.	Nainunis Aulia Izza, Syifaul F.	"DIGISTORY" History Books For Indonesia Future	B-94
21.	Hakkun Elmunsyah	A Study of Information and Communication Technology (ICT) Vocational High Schools (VHS) are Synergistic Against the National Education Policy	B-97
22.	Iwan Sonjaya, Rizkhita A.	Implementation of Edugame to Support Developing Multiple Intelligence of Early Childhood	B-101
23.	Azhar Ahmad, Waras, Slamet Wibawanto	Development of a Blended Learning Model for Apprenticeship Vocational Students of Class XI in Web Programming Subjects	B-106
24.	Abdalhakim	A Network Security for E-Commerce	B-111
25.	Asghaiyer M. , Bani Waleed	Internet Safety for Children in Libya	B-115
26.	Mohamed Saad A Sawa, Asrraje	Developing Knowledge Base System Based on PHP	B-118
27.	Faizatul Amalia	13 The Impact Of Constructivist Approach And Learning Motivation Towards Problem Solving Competency And Mastery Concept Of Basic Programming Competency In Smk 6 Malang	B-121

7
DESIGN AND IMPLEMENTATION OF VPN-MPLS (Virtual Private Network – Multi Protocol Label Switching) TOPOLOGY MODEL ON IP (Internet Protocol)

M. Irfan
Technique Faculty Electronic
Department Muhammadiyah
University Malang
Malang, Indonesia
irfan_tsd@yahoo.com

Lailis Syafa'ah
Technique Faculty Electronic
Department Muhammadiyah
University Malang
Malang, Indonesia
lailis_tsd@yahoo.co.id

Machmud Effendy
Technique Faculty Electronic
Department Muhammadiyah
University Malang
Malang, Indonesia
machmud@umm.ac.id

Abstract 6
VPN (Virtual Private Network) and MPLS (Multi Protocol Label Switching) are two different things, VPN handles network security case while MPLS creates new technology that can reduce third layer process for each network hop by labelling or grouping each protocols to reduce the congestion. If both of them are combined together, they will create a new better performance system. This research uses MPLS with BGP (Border Gateway Protocol) as routing protocol that is applied in GAN miniature at Virtual Private Network (VPN) design and implementation. This VPN-MPLS development will use protocol IPSec (IP Security) that keeps limited fix information. First step is integrating local network from a remote site into a MPLS network by creating access to every part of that integrated network. VPN-MPLS tesbed test shows that network connection between remote-site and MPLS network is simpler and it also can reach different class applied IP addresses when it is integrated into public network

Keywords : MPLS, VPN, BGP

I. INTRODUCTION

Today's communication model, especially data communication, should support broad band computer network to reduce its infrastructure cost from the internet service provider, where data access become unlimited. Virtual Private Network (VPN) that uses public network is potentially solving that network problem. VPN introduce a technology that can make all network traffic in the internet secure then it gives the network users much more secure feeling.

MPLS (Multi Protocol Label Switching) as a new comer in the networking technology is very interesting to be explored. MPLS has some advantages such as high speed access and network congestion prevention. The new problem is how to implement VPN in a MPLS network to get higher level system performance and security.

The discussion will be focused on the scenario planning of build VPN in a MPLS network and make network topology and configuration. Border Gateway Protocol (BGP) define a standardization that is proposed for a middle routing protocol *Autonomous System (AS)* for the internet. As a domain routing protocol, network covered area information that is switching by BGP can gives plenty information to

detect routing loops and take a routing decision based in performance option and authority limitation. On the other side, MPLS is a future internet routing technology. MPLS introduce new perception about forwarding mechanism that is connection oriented by using fix sized short cables.

MPLS divided into two components to provide label switching process, they are :

1. MPLS forwarding / label switching
2. Label distribution

MPLS Forwarding / Label Switching

Primary component of MPLS is forwarding/label switching function. While the most important tools in a MPLS protocol mechanism are *Label Switching Router (LSR)* and *Label Edge Router (LER)*.

LER is able to connect with different type of network, such as *Virtual Private Network (VPN)* and forward the traffic into the MPLS network after LSP is formed by using *signaling protocol in ingress (in pole)* router and distribute the traffic back to the network access at the egress(out pole). LER has an important function in the label deciding and switching as input or output traffic in a MPLS network.

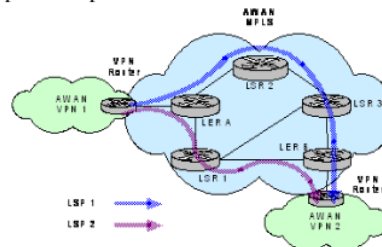


Figure 1. MPLS network with its LSP

LSP (*Label Switch Path*) itself is a route that is set up to deliver the packets in the MPLS.

Label Distribution

Label distribution in the MPLS can be solved by one or more way, such as:

1. Broaden the routing protocol such as BGP support label distribution.

2. The use of RSVP signalling in label distribution that is mapped in the RSVP flow.
3. The use of *Label Distribution Protocol (LDP)* as defined by IETF.

Virtual Private Network (VPN) is an option to make a network become private and secure by using public network such as internet. VPN could send data between two computers that pass the public network like they are point to point connected.

The data encapsulated by header that contains routing information to get point to point connection, so the data can pass the public network and go to the end point.

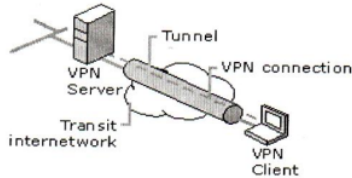


Figure 2. VPN based connection

To get private connection, sent data should be encrypted first to preserve the integrity so the packet that is caught while passing the public network cannot be read because the data should be decrypted first. In order for VPN to guarantee the network data security, it needs for service functions to assure the security of data that will be sent:

- 1). *Authentication*
- 2). *Access control*
- 3). *Confidentially*
- 4). *Data integrity*

II. SYSTEM DESIGN

The system design consists of network preparation, MPLS installation and configuration, LSP creation, and VPN installation and configuration.

Network Preparation

Each computer hardware and software that will be used in the system design should be prepared. After that, install the computers' operating system.

Hardware and Software Preparation

Define the hardware type and specification that will be used. That is the first thing to do. Each used computer has its own specification.

There is some software used in this system design such as:

1. Linux Debian Woody versi 3.0 r0 and Microsoft Windows XP as operating system.
2. Kernel linux-2.4.19.tar with MPLS172.patch, as MPLS software.
3. iptables-1.2.4-dscp.tgz that will be used for forwarding packet that will pass MPLS cloud nodes.
4. DSMPLS+IP.patch as diffserv application in the MPLS.

5. rsvpd.0.70-rc2.tgz as signalling protocol that is needed to create the MPLS cloud.
6. zebra-0.93a.tar.gz as BGP routing protocol provider.
7. openvpn-2.0.5-gui-1.0.3 as VPN open source daemon.
8. Iperf as software that contains sent data packet.

Operating System Instalation

This system design uses Windows for the VPN 1 machine computer. Other computers both in the MPLS cloud and VPN 2 use Debian Linux.

Instalasi dan Konfigurasi MPLS

After the basic system installed successfully, the next step is *Multi Protocol Label Switching (MPLS)* installation and configuration.

Before install the MPLS, Zebra should be installed first. Zebra is emulator software that can emulate some protocols such as BGP. After Zebra installation, install the MPLS kernel. It needs plenty of time. As it is installed the next process is RSVP signalling protocol installation. RSVP is being the MPLS signalling protocol.

Create the LSP

LSP is a route that is set up to send packets based on a *Forward Equivalence Class (FEC)* in the MPLS domain. FEC is a packet that is coded as a fix size short value known as *label*.

This creation is doing in the LER ingress by create a file that contains:

```
#destination source label I/D hop null
192.168.1.1 192.168.3.1 300 1 0 203.150.10.2:192.168.2.1 0 0
```

Notes:

1. Destination: the last destination IP in the MPLS route (in this case is LER egress)
2. Source: Starter IP source tin using MPLS route (in this case is LER ingress)
3. Label I/D: label that is used in the LSP creation (for the example: 100, 200, 300)
4. Hop: node that will be passed by the MPLS (in this case only the input IP ethernet card), can use more than one IP
5. Null: standard labeling parameter of MPLS (default 0 0)

Instalasi dan Konfigurasi VPN

VPN that is used is adalah VPN SSL (*Secure Socket Layer*), by using open program. VPN SSLde is easy to configure and can run under firewall and NAT (*Network Address Translation*). VPN open program is available in some versions and could run in any kind operating systems.

Instalasi dan Konfigurasi VPN Server (OS. Linux)

There are some steps in the VPN installation and configuration process when it used in the Debian Linux:

1. Open SSL installation
2. Open VPN installation
3. Certificate creation
4. Open VPN server configuration

Instalasi dan Konfigurasi VPN Client (OS. Windows)

Under Windows installation is easier than under Linux. Only by setting up the openvpn application VPN will auto configure itself.

If the client use Windows, then the Linux(VPN server)configuration file should be copied to the VPN directory.

III. RESULT

The test par is start by very basic test that is internetwork connection, then test the MPLS network, VPN test, system performance test, VPN packet test, and the last one is VPN routing VPN test.

Internetwork Connection Test

This step will test formed internetwork connection using “ping” to trigger test traffic among each machine. The result is:

```
C:\>ping 192.168.3.1
```

```
Pinging 192.168.3.1 with 32 bytes of data:
Reply from 192.168.3.1: bytes=32 time<1ms TTL=64
Reply from 192.168.3.1: bytes=32 time<1ms TTL=64
Reply from 192.168.3.1: bytes=32 time<1ms TTL=64
Reply from 192.168.3.1: bytes=32 time<1ms TTL=64
```

```
Ping statistics for 192.168.3.1:
    Packets: Sent = 4, Received = 4, Lost = 0 (0% loss),
    Approximate round trip times in milli-seconds:
        Minimum = 0ms, Maximum = 0ms, Average = 0ms
```

As shown by the result, when a machine do a “ping” to another machine (for example: ping 192.168.3.1), if both of them well connected, the destination address(192.168.3.1) will reply and indicate that the network is well connected.

MPLS Network Test

The next step is MPLS network test. It is consist of zebra and bgpd test that is BGP routing protocol, configured MPLS kernel, and designed MPLS and LSP signal protocol.

zebra and bgpd test

Zebra and bgpd are emulator software that can emulate some protocols, as the example BGP define a standard of inter Autonomous System (AS) protocol

routing. Making sure that zebra and bgpd is well run by giving command:

```
debian:~# ps ax |grep zebra
; maka akan muncul:
176 ? S      0:00 zebra -d

debian:~# ps ax |grep bgpd
; maka akan muncul:
178 ? S      0:00 bgpd -d
```

If Zebra and bgpd is active then the interface will indicate that bithof them are running. The wait for a seconds to activate both daemon, after that check the routing table at the router by “route -n” command, the result is:

```
debian:/home/rsvp/rsvpd# route -n
Kernel IP routing table
Destination Gateway Genmask Flags Metric Ref Use Iface
192.168.3.0 0.0.0.0 255.255.255.0 U 0 0 0 eth1
202.150.10.0 0.0.0.0 255.255.255.0 U 0 0 0 eth2
192.168.2.0 203.150.10.2 255.255.255.0 UG 0 0 0 eth2
192.168.1.0 203.150.10.2 255.255.255.0 UG 0 0 0 eth2
203.150.0.0 203.150.10.2 255.255.255.0 UG 0 0 0 eth2
192.150.1.0 203.150.10.2 255.255.255.0 UG 0 0 0 eth0
202.150.1.0 0.0.0.0 255.255.255.0 U 0 0 0 eth0
192.168.10.0 203.150.4.2 255.255.255.0 UG 0 0 0 eth2
0.0.0.0 203.150.10.2 0.0.0.0 UG 0 0 0 eth1
0.0.0.0 192.168.3.2 0.0.0.0 UG 0 0 0 eth0
0.0.0.0 203.150.4.2 0.0.0.0 UG 0 0 0 eth0
```

Figure 3. Routing Table Test Result

MPLS Kernel Test

If all software related with MPLS is well installed and configured then the MPLS kernel can be checked whether it has been created or not. The test is:

```
debian:~# dmesg | grep -i mpls
; maka akan muncul:
MPLS version 1.172 11/14/2002
jleu@mindspring.com
```

MPLS Signalling Protocol Test

The test is:

```
debian:/home/rsvp/rsvpd# ./rsvpd -D
```

Output interface:

```
debian:/home/rsvp/rsvpd# ./rsvpd -D
12:32:10.550 RSDP Version 4.2a(1)-0-70-ec2. Compiled on: Aug 09 2006 at 13:30
12:32:10.550 Log level:7 Debug mask:7 Start time: Mon Jan 15 12:32:10 2007
12:32:10.550 Physical, Virtual, and API interfaces are:
12:32:10.551 0 eth1 0.0.0.0 (0) Null #
12:32:10.551 1 eth0 203.150.4.1 (3) Null #
12:32:10.552 2 eth1 192.168.3.1 (4) Null #
12:32:10.552 3 eth2 203.150.10.1 (5) Null #
Flag (0-1) RSDP Test Application
RSDP API version 5.0c
Enter T or command:
T>
```

Figure 4. MPLS Signalling Protocol Test Result

The test result shows that MPLS signalling protocol is well created and has been activated. Then each node has different interface, in this case are eth0, eth1, eth2. Each ethernet has different IP address that is ready to do a routing to their own destination.

LSP Test

LSP testing at the ingress side in the VPN cloud is done by using command:

```
debian:/home/rsvp/rsvpd/labeltest#
./rtst2 -f /home/rsvp/lspbaru
```

Then in the egress side by using command:

```
debian:/home/rsvp/rsvpd/labeltest# ./rapirecv_auto
```

If the LSP is well formed then the interface output is:

```
debian:/home/rsvp/rsvpd/labeltest# ./rtst2 -f /home/rsvp/lspbaru
203.150.10.2
192.168.2.1
Path Message to: 192.168.1.1, Port: 300
Rapi_Session: session id=1 ,fd=4
use etid 0
Seto admin mode
Enter 'session id' of the LSP to tear down
```

Figure 5. Ingress Side LSP Test Result

The above test result shows that LSP is well running. It can be seen that this LSP destination is 192.168.1.1 by passing some hops that are 203.150.10.2 and 192.168.2.1 using label 300.

```
debian:/home/rsvp/rsvpd/labeltest# ./rapirecv_auto
Building LSP from 192.168.3.1:300 to 192.168.1.1 LSPID 300 EXT LSPID 0.0.0.0
[CL 190K(190K) p=190K m=512 M=1.5K] B=2.01 S=3.2261
Rapi_Session: sid=1 ,fd=4 0
Filterspecs 1 Flowspecs 1
rapi_reserve(): 0
```

Figure 6. Egress side LSP Test Result

Test result above shows that LPS is well formed and running. The indication is “Building LSP from 192.168.3.1:300 to 192.168.1.1 LSPID 300”. It means that the LPS developed at the ingress side by address 192.168.3.1 and destination at the egress side by address 192.168.1.1 by label 300.

From that test result (both ingress and egress), the it can be guarantee that formed LSP is precisely based on the file created at the design process before named “lspbaru” that is saved in the /home/rsvp directory.

VPN Test

Test is done in the VPN *server* machine (OS. Linux Debian) and in the VPN *client* machine (OS. Windows). The purpose is to examine whether the VPN that is set up and configured in each VPN is running well or not. Later, we can know the status or condition in each machine both VPN server and VPN client.

VPN Server Machine Test

Knowing whether VPN in the VPN server machine is well running or not by activate the VPN daemon. The test is:

```
debian:~# /etc/init.d/openvpn start
```

If VPN program is active, the interface output is:

```
debian:~# /etc/init.d/openvpn start
Starting virtual private network daemon: openvpn.
```

Figure 7. Activated VPN Daemon Indication

That result show that the daemon is active, indicated by: “Starting virtual private network daemon: openvpn.”. This indication is precisely based on the designed program where the VPN connection is developed using openvpn packet.

Command below is used to stop the VPN daemon:

```
debian:~# /etc/init.d/openvpn stop
```

The result shown in figure 8 that indicate that VPN daemon is stopping (“Stopping virtual private network daemon”).

```
debian:~# /etc/init.d/openvpn stop
Stopping virtual private network daemon
```

Figure 8. Stopping VPN Daemon Indication

VPN Client Machine Test

Figure 9 shows that in the taskbar there is an icon that indicate that openVPN is installed, but the program is not active or connected to the VPN server machine (the icon colour is still red).



Figure 9. Icon Open VPN in the Taskbar

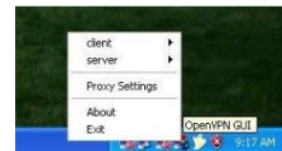


Figure 10. Open VPN Icon Main Menu

To activate it, right click on the icon to show the main menu. As the VPN client, click “client” on the menu (figure 10), then choose “connect” to connect the VPN *client* and VPN *server* (figure 11).

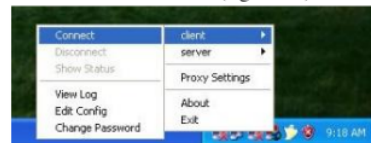


Figure 11. Additional Open VPN Icon Menu

After some process, if the process is successful then the icon colour is green and there is pop up window contains information "client is now connected". It indicates that VPN client is connected to the VPN server (figure 12).

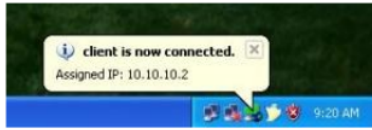


Figure 12. VPN Client Connected to the VPN Server Indication

To stop or make the connection between VPN client and server non active, right click in the openVPN taskbar icon, then the menu will raise up. Choose "client" then choose "Disconnect" (figure 13).

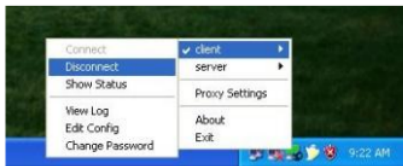


Figure 13. Disconnect VPN Client with VPN Server

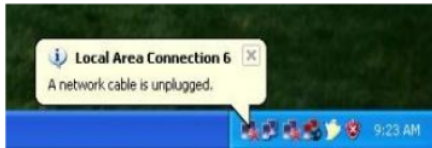


Figure 14. Open VPN Icon after disconnected

Figure 14 indicates that the connection is disconnected now.

IV. CONCLUSION

1. VPN can be implemented using MPLS based public network as forwarding mechanism at streaming data packet using BGP as system routing protocol.
2. VPN connection is formed after a configuration on IPSec and a feature in BGP because the configuration is only can be done on that daemon where all connection and database address is managed in that network configuration.
3. IPSec is used for data security in VPN tunnel that connects two CE router in VPN cloud by encrypt the data.
4. By using precise algorithm, VPN data communication service can be developed using identity validity in every part that is involved in that communication process.

Suggestion

1. To solve problem that is risen up while VPN development in MPLS network, the development

procedure should get more attention. Hardware and software preparation, operating system installation, IP addressing, MPLS configuration, LSP making, VPN configuration should well running from the beginning.

2. VPN has been successfully integrated with MPLS, in the next development should be integrated using Ipv6.

REFERENCES

- [1] Alwayn, V., 2002, *Advanced MPLS Design and Implementation*, Cisco Press, USA.
- [2] Azikin, A., Adi, A.S., Ady, G, 2004, *Debian GNU/Linux*, Andi, Yogyakarta.
- [3] Adrian Farrel, Paul Brittain, 2001, "Protection and Restoration in MPLS Network", <http://www.Dataconnection.com>.
- [4] Armitage, Grenville, January 2000, "MPLS: the Magic Behind the Myths", IEEE Communication Magazine.
- [5] Ayan Banerjee, John Drake, Jonathan P. Lang, Brad Turner, Kireeti Kompella, Yakov Rekhter, January 2001, "Generalized Multiprotocol Label Switching : An Overview of Routing and management Enhancements", IEEE Communications Magazine.
- [6] Chuk Semeria, 2001, "RFC 2547bits BGP/MPLS VPN Fundamental", Juniper Network, Inc USA, <http://www.juniper.net>
- [7] Cisco, 2001, "Configuring Basic MPLS Using OSPF", Cisco system, <http://www.sisco.com>.
- [8] Eric C.Rosen, Arun Viswanathan, Ross Callon, April 1999, "Multiprotocol Label Switching Architecture", Internet draft.
- [9] Glen Kramer, Mei 2001, "Self Similar Network Traffic: The Notions and Effects of Self-Similarity and Long-Range Dependence," uc Davis.
- [10] Holly Xiao, 2002 " Security Meauserment On MPLS-VPN" white Paper
- [11] Integral Acces, Inc, 2000, "MPLS and Next Generation Acces Network. <http://www.integralaccess.com>
- [12] Juniper, 2001, " Solution Profile: Eliminating Congestion for Backbones", Juniper Network.
- [13] Karlson, Par and Arvidson, Ake, "On TCP/IP Traffic Modelling" University of Karlskrona.Sahinoglu, Zafer and Tekinay, Sirin. On Multimedia Network, "Self-similar traffic and Network Performance", New Jersey Institute of Technology.
- [14] L. Casey, "An extended IP VPN Architectur IETF", 1998, Link Article and references.html, USA
- [15] L. Casey, I. Cunningham and R. Eros, 1998, "IP VPN Realization using MPLS Tunnels IETF", Link and Article and references.html, USA
- [16] Lailis S. Irfan, Machmud 2002, "Multi Protocol Label Switching Sebagai Paradigma Baru Jaringan Internet", Penelitian Dosen Muda.

SEMINAR ON ELECTRICAL, INFORMATICS, AND ITS EDUCATION 2013

- [17] Lailis S, 2003, "*Analisis Pembebanan Trafik Selsf Similar Jaringan MPLS (Multi Protocol Label Switching) Pada Internet*", Penelitian Dosen Muda.
- [18] Leland, W, M. Taquu, W. Wilinger, and D. Wilson, 1994, "*On the Self-Similar Nature of Ethernet Traffic (Extended Version)*," IEEE/ACM Transactions on Networking, 2(1), pp. 1-13.
- [19] Madalina Baltatu, Antonio Liroy, 2000, "*IP Security*", Dip. Automatica e Informatica Politecnico di Torino, Italy.
- [20] Praveen Bhaniramka, Wei Sun, Raj Jain, 2000, "*Quality of Service using Traffic Engineering over MPLS: An Analysis*", Departemen of Computer and Information Science, Ohio Stae University, bhaniram@cis.ohio-state.edu, wsun@cis.ohio-state.edu, jain@cis.ohio-state.edu.
- [21] Xipeng Xiao, Alan Hannan, Brook Bailey, 2000, "*Tarffic EGINEERING with MPLS in Internet*", Departemen of Computer Science Michigin State University, East Lansing.

DESIGN AND IMPLEMENTATION OF VPN-MPLS (Virtual Private Network – Multi Protocol Label Switching) TOPOLOGY MODEL ON IP (Internet Protocol)

ORIGINALITY REPORT

11%

SIMILARITY INDEX

10%

INTERNET SOURCES

4%

PUBLICATIONS

5%

STUDENT PAPERS

PRIMARY SOURCES

1	Submitted to American Intercontinental University Online Student Paper	2%
2	Submitted to Universitas Brawijaya Student Paper	1%
3	mail.ijair.id Internet Source	1%
4	www.semanticscholar.org Internet Source	1%
5	www.jatit.org Internet Source	1%
6	eprints.umm.ac.id Internet Source	1%
7	docplayer.net Internet Source	1%
8	journal.peradaban.ac.id Internet Source	1%

9

kipdf.com

Internet Source

1 %

10

Submitted to Chindwin College

Student Paper

1 %

11

docplayer.info

Internet Source

1 %

12

eprints.uny.ac.id

Internet Source

1 %

13

journal.unilak.ac.id

Internet Source

1 %

Exclude quotes On

Exclude matches < 1%

Exclude bibliography On



Digital Receipt

This receipt acknowledges that **Turnitin** received your paper. Below you will find the receipt information regarding your submission.

The first page of your submissions is displayed below.

Submission author: Artikel 8
Assignment title: Lailis Syfaah
Submission title: DESIGN AND IMPLEMENTATION OF VPN-MPLS (Virtual Privat...
File name: rotocol_Label_Switch_Topology_Model_on_IP_Internet_Protoc...
File size: 1.16M
Page count: 13
Word count: 4,562
Character count: 24,391
Submission date: 17-Jan-2024 11:04AM (UTC+0700)
Submission ID: 2272322659

